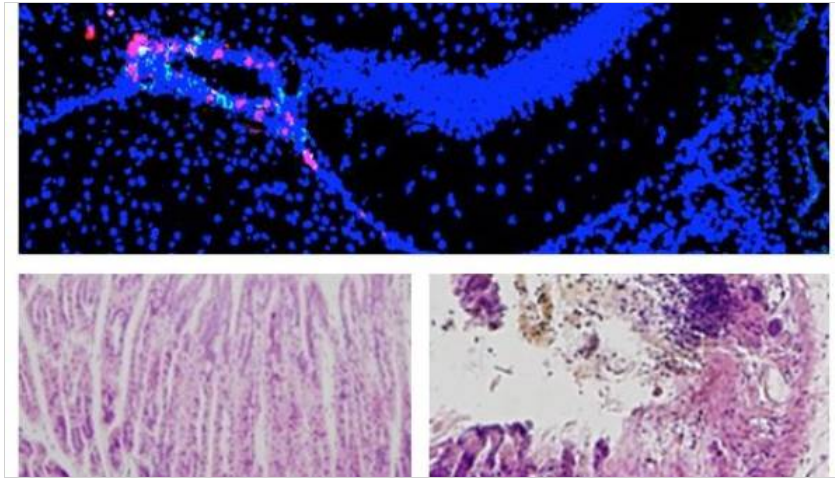


Top > Medicine, Health Care > Chronic Stress Induces Fatal Organ... >



Chronic Stress Induces Fatal Organ Dysfunctions Via a New Neural Circuit

Published: August 21, 2017.
Released by [Hokkaido University](#)



[Go to mobile page.](#)

New research reveals the mechanisms behind the effects of chronic stress and tiny inflammations in the brain on fatal gut failure.

Hokkaido University researchers revealed that fatal gut failure in a multiple sclerosis (MS) mouse model, EAE, under chronic stress is caused by a newly discovered nerve pathway. The findings could provide a new therapeutic strategy for the intractable disease, particularly progressive MS, which has no therapeutic strategy at present.

MS affects an estimated 2.5 million people worldwide and causes motor dysfunction, impaired vision and gastrointestinal failures. It is an autoimmune condition of the central nervous system (CNS) mediated by immune cells called autoreactive CD4+ T cells. In EAE mouse models, these pathogenic CD4+ T cells can cause a MS-like disease when transfused intravenously to healthy mice.

In previous studies using EAE mouse models, Professor Masaaki Murakami of Hokkaido University and his colleagues revealed autoreactive CD4+ T cells cross the blood-brain barrier at specific sites and cause inflammation in the CNS including the brain and spinal cord. The emergence of a "gateway" for autoreactive CD4+ T cells to cross the barrier was caused by regional neural activation at those sites, which is triggered by specific sensory-sympathetic interactions. They termed these phenomena as gateway reflexes and have published on at least three, the gravity-, electric-, and pain-gateway reflexes.

In the present study, the team and their collaborators in Japan and Germany investigated the possible relations between chronic stress, micro-inflammation in the brain, and stress-related organ failures.

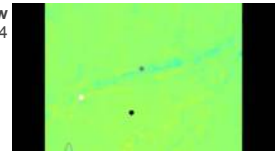
They put healthy mice under stress by disturbing their sleep or by rearing them on wet bedding. The transfer of pathogenic CD4+ T cells under the stress caused severe symptoms such as gastrointestinal failures and even sudden death. Cell transfer or stress alone did not cause these symptoms. Subsequent investigations revealed a complex nerve-related mechanism behind this process.

The injected pathogenic CD4+ T cells accumulated around blood vessels in two specific sites at the center of the brains of the stressed mice. Micro-inflammation developed around specific blood vessels, and the inflamed sites then released a small molecule called ATP that switched on a nerve pathway that is normally turned off. This switch led to gut dysfunctions, bleeding and failure. Also, the bleeding led to increased levels of potassium in the blood, which was one of factors leading to heart failure.

The team was able to prevent gut failure by suppressing inflammation in the brain or blocking nerve pathways from the brain to the gut. The results suggest that tiny areas of inflammation around some specific vessels in the brain, which are known to happen in various brain diseases including multiple sclerosis, are a risk factor for organ dysfunctions including severe gut and heart failure.

Related »

Flow
6/12/14



Brain Power

Tau Blows to Head Damage Brain's
12/3/14 'Garbage Truck,' Accelerate
Dementia

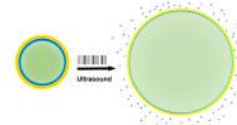
A new study out today in the Journal of Neuroscience shows that traumatic brain injury can disrupt the function ...

Brain New Study Maps the
9/22/15 Progression of Parkinson's
Disease Within the Brain
Scientists at the Montreal
Neurological Institute and Hospital -
The Neuro, at McGill University and
the McGill University Health Centre,
...

Light Device Delivers Drugs to Brain
7/17/15 Via Remote Control

★★★★ A team of researchers has developed a wireless device the width of a human hair that can be implanted ...

Drug
1/23/17

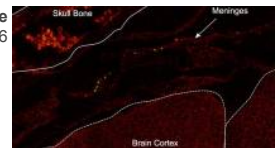


Noninvasive Ultrasound Pulses
Used to Precisely Tweak Rat
Brain Activity

Normal Cell Density Remains Constant
6/15/15 as Brain Shrinks with Age

New, ultra-high-field magnetic resonance images (MRI) of the brain by researchers at the University of Illinois at Chicago provide ...

Immune
3/28/16



GI Tract Bacteria Help Decrease
Stroke

More »

"These results demonstrate a direct link between brain micro-inflammation and fatal gastrointestinal diseases via the establishment of a new neural pathway under stress," says Masaaki Murakami. "Micro-inflammation in the brain is also seen in Alzheimer's disease and Parkinson's disease. So it's of particular interest to investigate possible connections between brain micro-inflammations and organ dysfunctions, including those within the brain itself, in those patients."

The study was published in the journal *eLife*.

Journal reference: [dx.doi.org/10.7554/eLife.25517](https://doi.org/10.7554/eLife.25517)

The above story is based on materials provided by Hokkaido University.

Translate this page: [Chinese](#) [French](#) [German](#) [Italian](#) [Japanese](#) [Korean](#) [Portuguese](#) [Russian](#) [Spanish](#)
